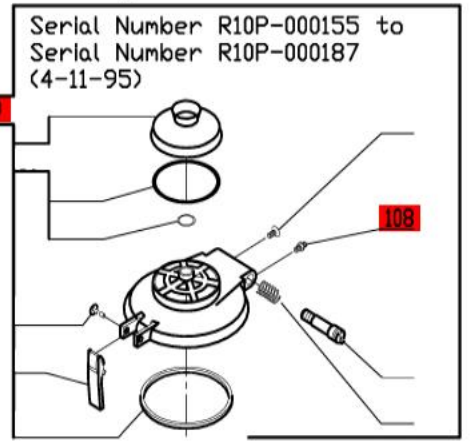
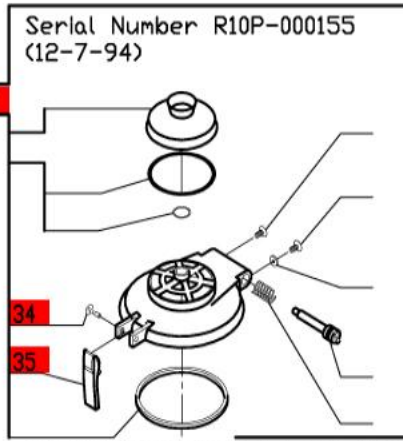
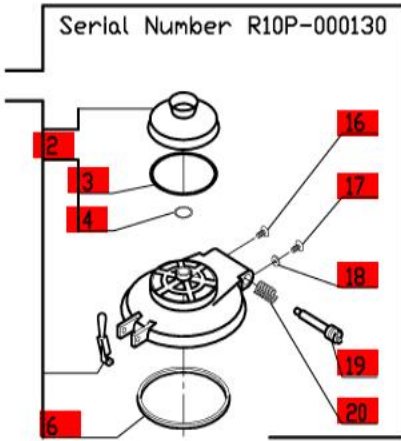
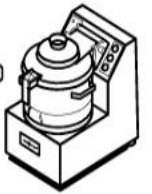


R10P

1- Speed, 208-240 Volt, 3 Phase, 60Hz.,
1725 RPM, 14.5 Amp, 3 HP.

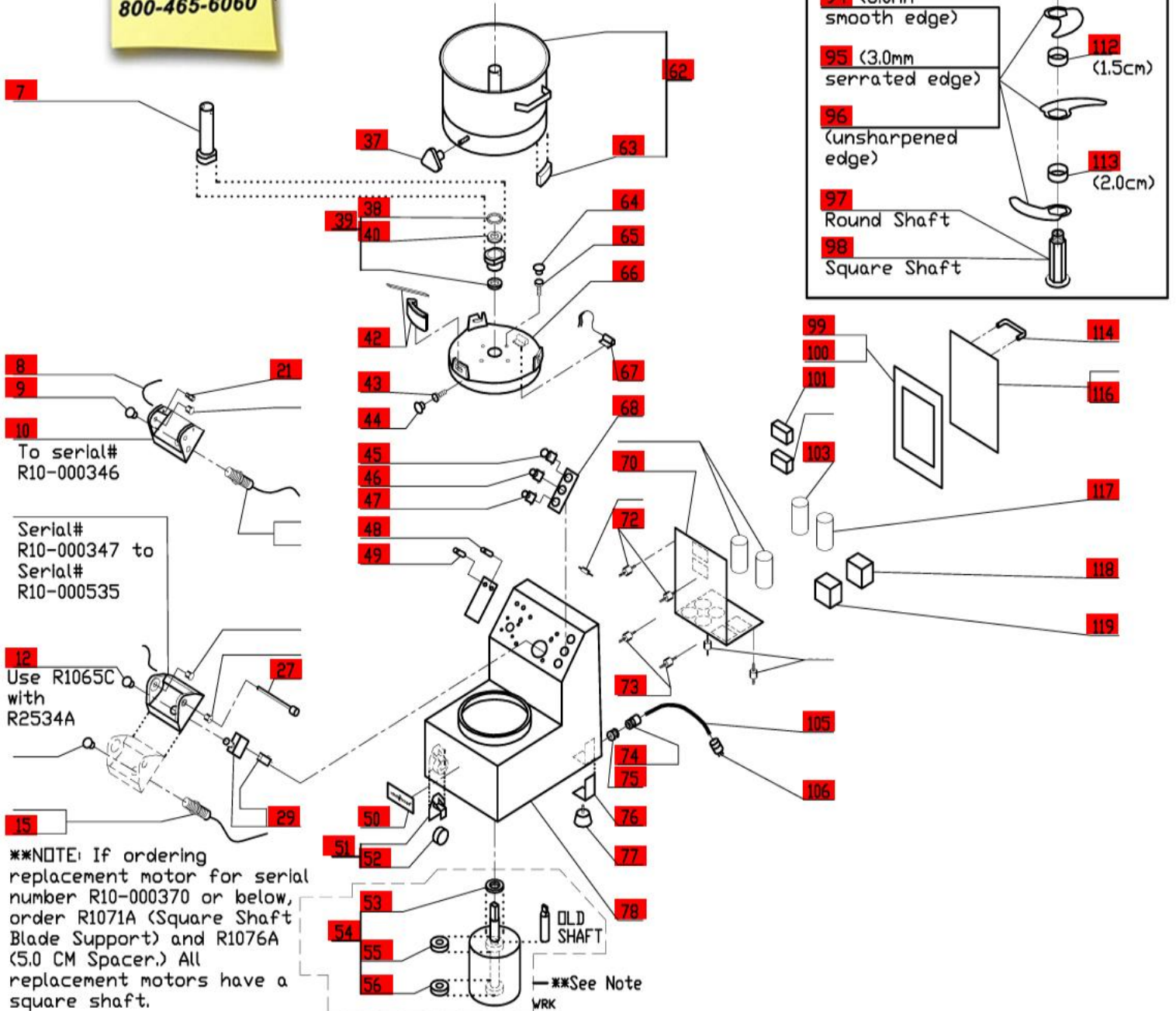
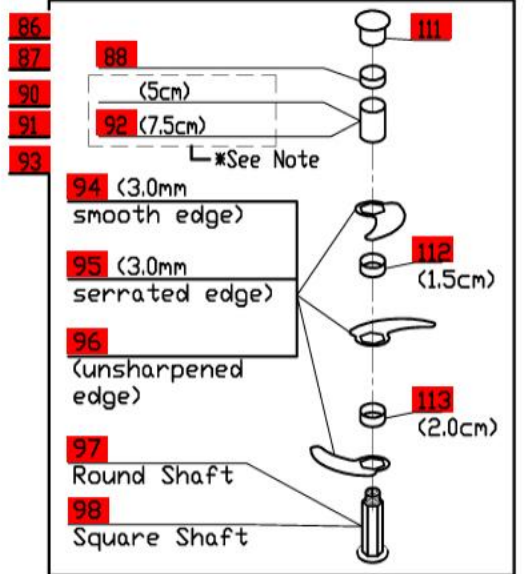
Machines with serial numbers R10P-000180 and below.

NOTE: If ordering replacement motor for serial number R10-000370 or below, order R1071A (Square Shaft Blade Support) and R1076A (5.0 CM Spacer.)



Click on Red Dot
OR
Call us
800-465-6060

*NOTE: When using part number R1071 (round shaft blade support), use part number R1076 (7.5cm spacer). When using part number R1071A (square shaft blade support), Use Part number R1076A (5.0cm spacer).



**NOTE: If ordering replacement motor for serial number R10-000370 or below, order R1071A (Square Shaft Blade Support) and R1076A (5.0 CM Spacer.) All replacement motors have a square shaft.