

R6 Series

R6N, R6B, R6C

Machines Manufactured before March of 1996

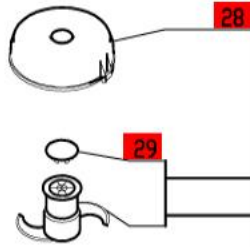
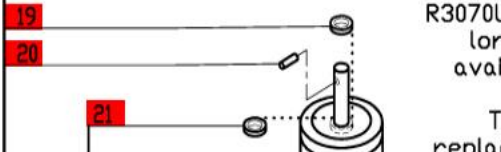
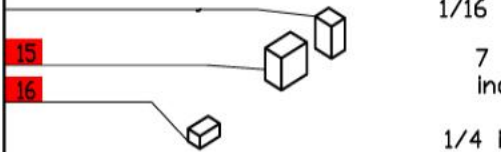
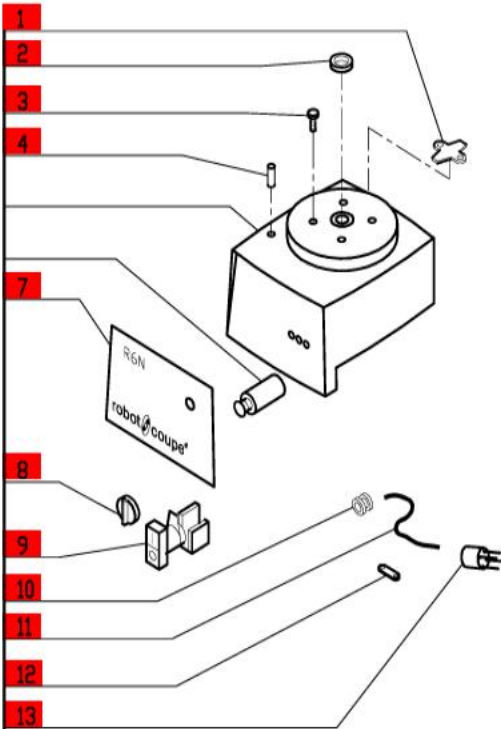
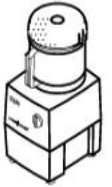
Serial Numbers up to R6N002727N also R6N002767N to R6N002768N

2- Speed, 208-240 Volt, 3 Phase, 60Hz., 1 HP.

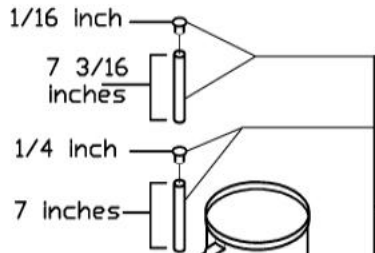
Low Speed-850 RPM, 2.6 Amps

High Speed-1725 RPM, 2.8 Amps

Use C Designated Plates.



If you have a six-sided motor shaft, call the factory for blade parts.



Note: Part number R670 with plastic caps, part number R3070U, is no longer available.

The replacement part number R670, incorporates a metal plug cap.

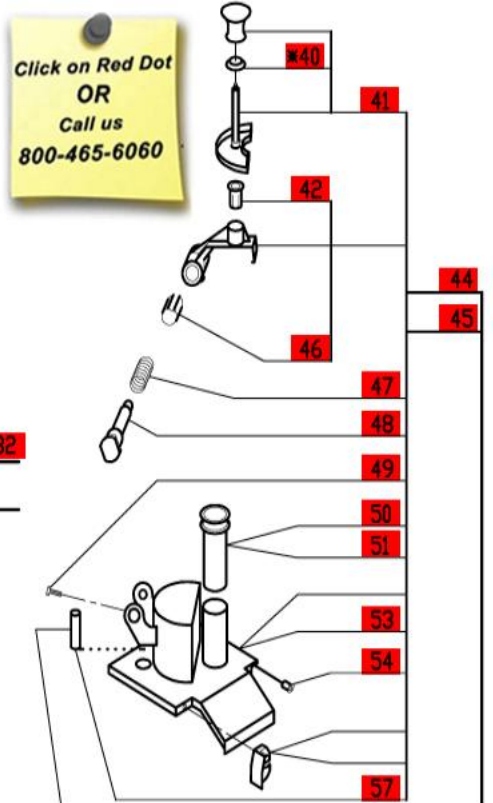


CLICK HERE FOR DISCS

ACCESSORIES

NOTE: Use "C" designated plates.

Click on Red Dot OR Call us 800-465-6060



(Optional) extra safety

