

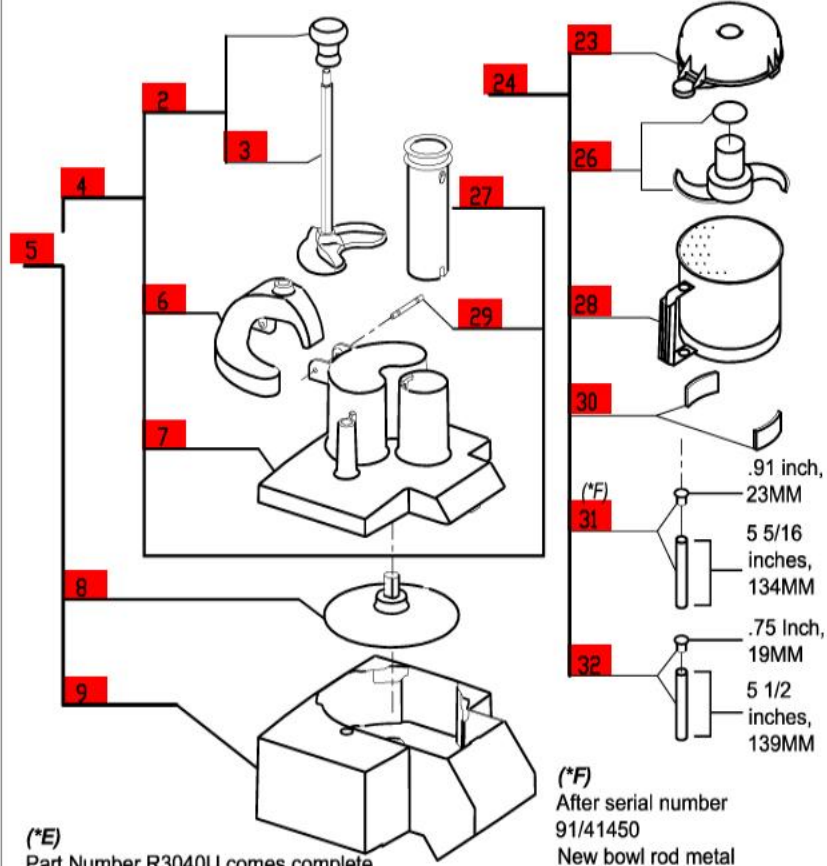
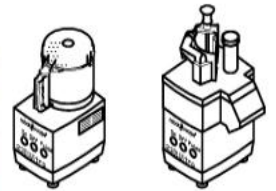
R301 Ultra

Serial Numbers 91/xxxx

1- Speed, 120 Volt, 1 Phase, 60Hz., 1/2 HP.

1725 RPM, 7.2 Amps

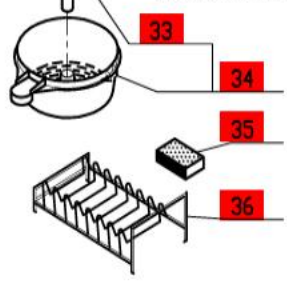
Click on Red Dot
OR
Call us
800-465-6060



(*E) Part Number R3040U comes complete with magnetic switch. After serial number 91/30xxx use new PC board number R3040UA which includes magnetic switch number R3061A.

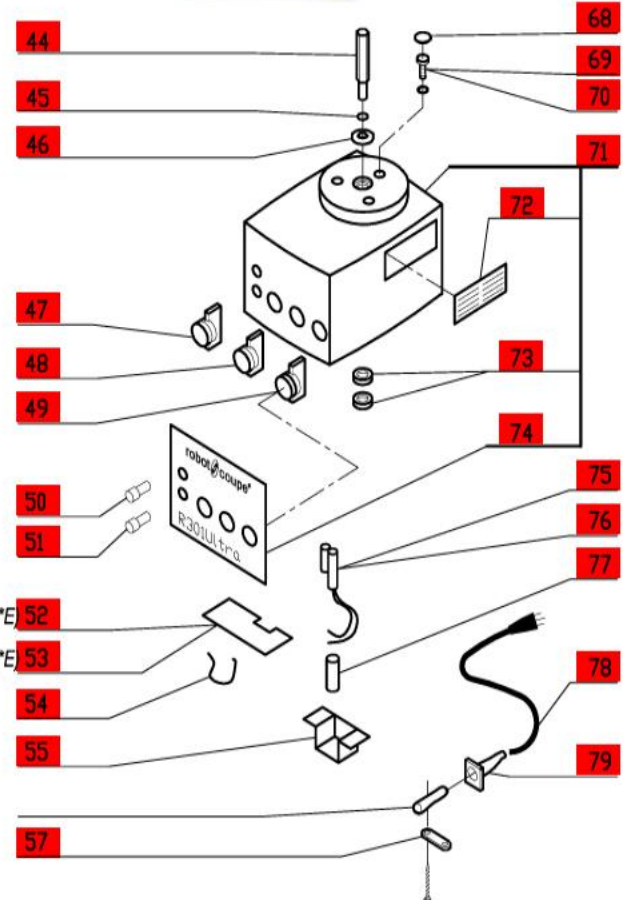
(*F) After serial number 91/41450 New bowl rod metal bushings R3071UA replaces rod with plastic caps.

ACCESSORIES



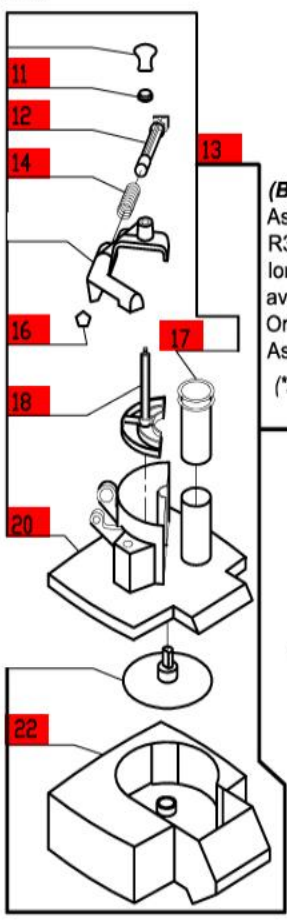
(*B) Assembly R3056A is no longer available. Order 27213 Assembly (*B)

(*A) Part No Longer Available

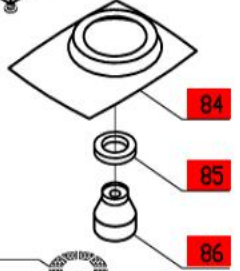
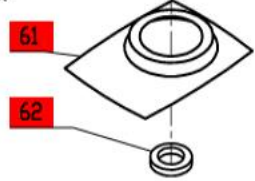
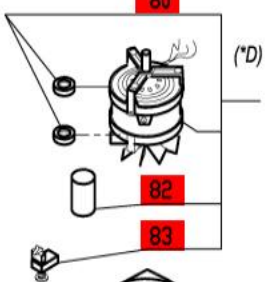
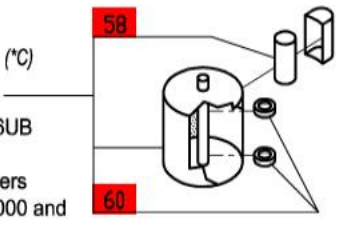


CONVERSION KIT: R3006K
1-R3006UB-Magnetek Motor
1-R3004B
3-R3025A
2-R1716
1-R222

(*D) Use conversion kit R3006K to replace open frame motor of R301U. Serial Numbers 91/00001 to number 91/20000:



(*C) R3006UB Serial Numbers 91/20000 and above (Magnetek Motor).



63 Canada Only
64 Canada Only

(*F) After serial number 91/41450

