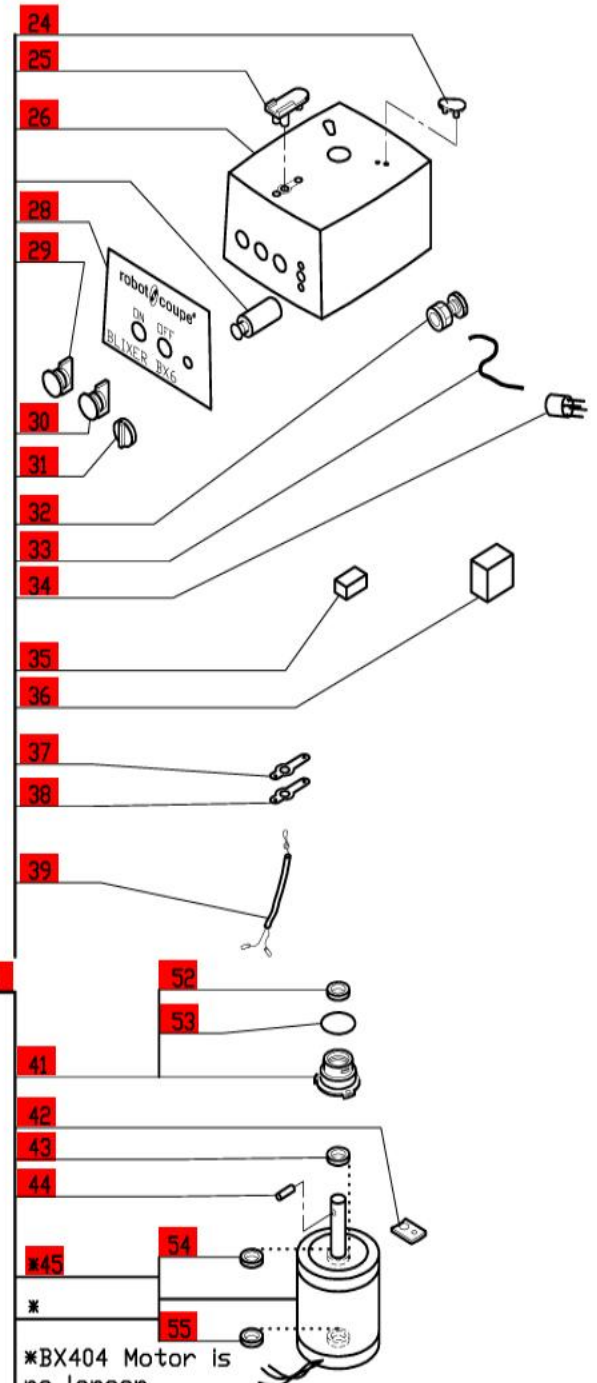
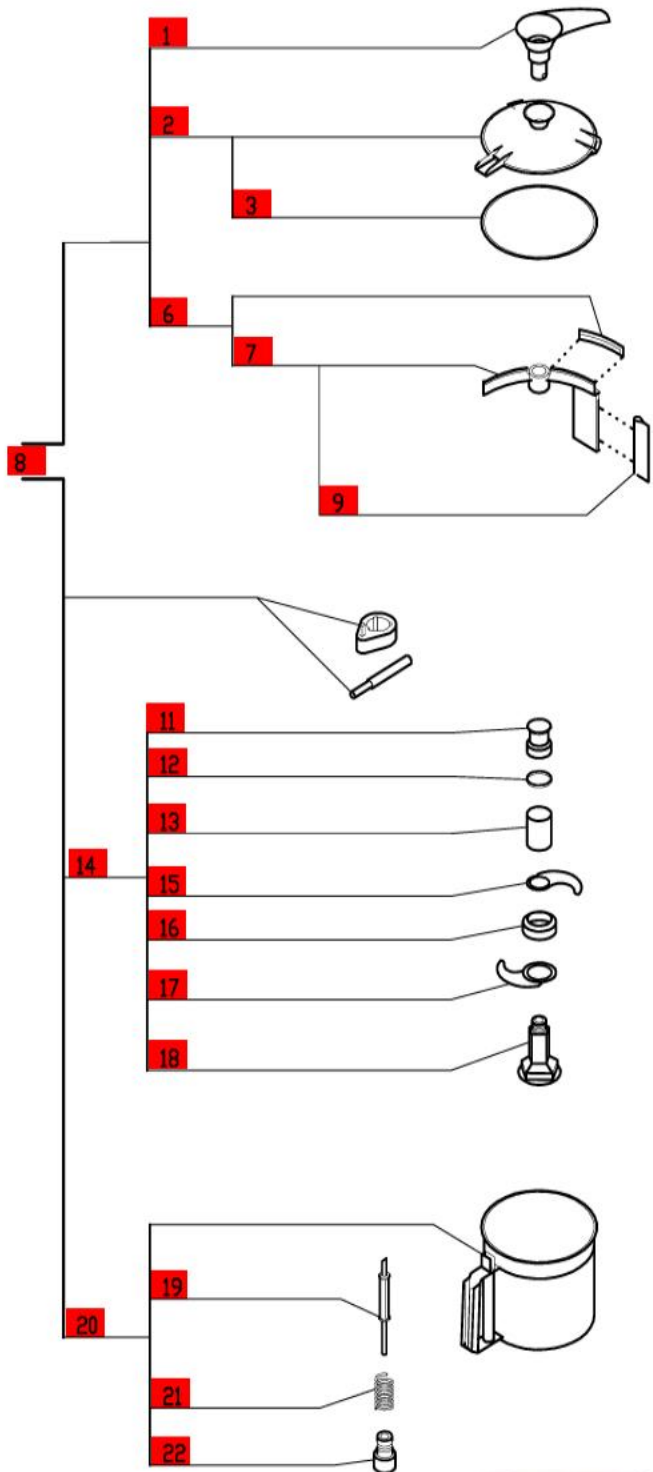


BX6 Blixer®

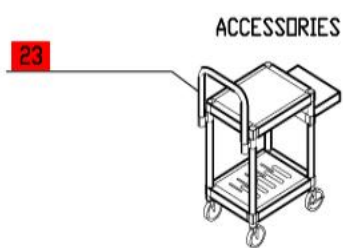
2 Speed, 208-240 Volt, 3 Phase, 60Hz., 2 HP.

Low Speed- 1725 RPM, 5.3 Amps

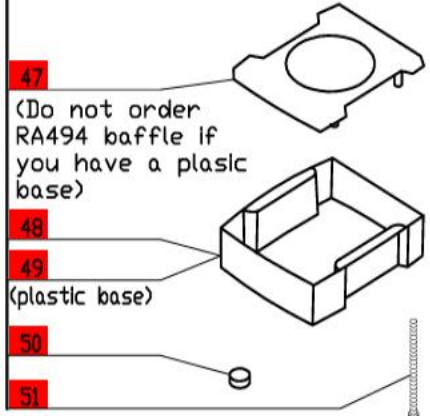
High Speed- 3450 RPM, 5.8 Amps



*BX404 Motor is no longer available. Order S193456 motor and R611 seal.



**Click on Red Dot
OR
Call us
800-465-6060**



47
(Do not order RA494 baffle if you have a plastic base)
48
49
(plastic base)
50
51